

FALL 2007

HOT BEVERAGE CONTAINERS



INTERNATIONAL  PAPER

Foodservice
Business

ABOUT INTERNATIONAL PAPER FOODSERVICE BUSINESS

International Paper Foodservice Business is the partner you need to help you grow both today and tomorrow. We are committed to understanding your business and the trends that drive the overall foodservice market. With a wide range of disposable packaging products and services, we can provide traditional and innovative high-quality packaging solutions that will be a continuing source of satisfaction to your customers.

Understanding the particular needs of your business is at the core of everything we do. We provide a variety of the highest quality disposables necessary to service your establishment's take out needs. Our packaging will help you advertise and enhance your brand.

With a dedicated staff of designers, our Graphics organization utilizes a collaborative approach to solving your graphic needs. Packaging solutions can also be designed to meet your business challenges by partnering with our innovative product development and technology teams.

Our world-class manufacturing sites and strategically located warehouses ensure reliable domestic and international distribution. At International Paper Foodservice Business, we take pride in providing superior service – delivering your orders on time, in full and without errors.

As part of International Paper, the world's largest paper and forest products company, we offer the assurance of over 100 years of experience backed by a dedicated team of professionals available to service all your needs. As your partner, your success is our success – today and tomorrow. We look forward to helping you grow.

For more information, visit www.ipfoodservice.com or call toll-free at 1-800-537-4141.



HOT CUPS AND LIDS

Whether you have a corner coffee shop or a large chain of stores, our paper hot cups, lids, sleeves and carriers are designed to meet your needs.

The ecotainer™ hot cup is part of a revolutionary new line of foodservice packaging that provides a more environmentally sensitive alternative to traditional disposables. Sourced from fully renewable resources, these cups use a corn-based plastic as a moisture barrier rather than a petro-chemical plastic. This new PLA-based coating also makes the cup compostable in municipal and commercial composting facilities. Combined with a smaller manufacturing energy requirement, the ecotainer™ hot cup reduces our environmental impact while providing all the functionality of a standard cup.

Our standard line of paper hot cups provides an attractive and sturdy vehicle for all of your hot beverages. Several styles of lids are available to keep beverages at serving temperature and minimize spills. Add a Cup Buddy™ in kraft or white and a carrier to complete your hot beverage packaging needs.



Hot Cups

SIZE COMPARISON CHART

HOT CUPS & LIDS



SMR-4 / SMRE-4 4 oz. SMR-6 6 oz. SMR-8 / SMRE-8 8 oz. SMR-10 10 oz. SMT-12 12 oz. Tall



LHRM-4

LHRL-6
LHRL-8
LHRL-10
LHSL-16
LHRL-16
LHRL-24

COMMON LIDS (3 options)



SMM-10 / SMME-10 10 oz. Squat SMR-12 / SMRE-12 12 oz. SMR-16 / SMRE-16 16 oz. SMR-20 / SMRE-20 20 oz. SMT-24 24 oz.



LHRDS-8
LHRDS-10
LHTDS-12
LHRDS-16



LHRDSB-8
LHRDSB-10
LHRDSB-16

KX2 INSULATED HOT CUP & LID SYSTEM

COMMON LIDS (3 options)



IMR-12 12 oz. IMR-16 16 oz. IMR-20 20 oz. IMR-24 24 oz.



LHIDS-16
LHIDS-24



LHIDSB-16
LHIDSB-24



LHIL-16

VENDING HOT CUPS & LIDS

COMMON LID

COMMON LID



SVR-7 7 oz. SVR-8 8 oz. SVR-10 10 oz. SVR-12 12 oz. SVS-12 12 oz. Squat



LHSL-8
LHSL-9
LHSL-12

CUP BUDDY



RCDK-20 Kraft Unprinted RCDK-20 Kraft Printed RCDK-20 Kraft Printed
RCDW-20 White Unprinted RCDW-20 White Printed

HOT CUP WITH HANDLE



SMRH-4 4 oz. SMRH-8 8 oz.

HOT CUPS



SIZE/DESC	STOCK #	DESIGN/COLOR	CASE/SLEEVE QUANTITY	CASE WT. (LBS.)	CASE CUBE (CU. FT.)	LID
4 oz.	SMR-4	CB, SH	1000 / 50	9.1	1.33	LHRM-4
4 oz. (w/ handle)	SMRH-4	CB, SH	1000 / 50	9.1	1.33	LHRM-4
6 oz.	SMR-6	I, SH, CB	1000 / 50	18	2.45	LHRL-6
8 oz.	SMR-8	I, SH, SM, CB	1000 / 50	20.7	2.73	LHRL-8, LHRDS-8, LHRDSB-8
8 oz. (w/ handle)	SMRH-8	CB, SH	1000 / 50	20.7	2.73	LHRL-8, LHRDS-8, LHRDSB-8
10 oz.	SMR-10	I, SH, SM, CB	1000 / 50	25.3	2.92	LHRL-10, LHRDS-10, LHRDSB-10
12 oz. tall	SMT-12		1000 / 50	27.1	3.16	LHTDS-12
10 oz.	SMM-10	I, SH	1000 / 50	25.3	3.70	LHRL-16, LHRDS-16, LHRDSB-16
12 oz.	SMR-12	I, SH, SM, CB	1000 / 50	26.8	3.14	LHRL-16, LHRDS-16, LHRDSB-16
16 oz.	SMR-16	I, SH, SM, CB	1000 / 50	34.7	3.99	LHRL-16, LHRDS-16, LHRDSB-16
20 oz.	SMR-20	I, SH, SM, CB	500 / 25	19.9	2.83	LHRL-16, LHRDS-16, LHRDSB-16
24 oz.	SMT-24	SH, CB	500 / 25	22.7	2.87	LHRL-16, LHRDS-16, LHRDSB-16

COMMON LIDS

COMMON LIDS

HOT CUP LIDS



STOCK #	DESIGN/COLOR	CASE/SLEEVE QUANTITY	CASE WT. (LBS.)	CASE CUBE (CU. FT.)
LHRM-4	FLAT / WHITE	1000 / 100	3.6	1.73
LHRL-6	LOCK-BACK / WHITE	1000 / 100	5.5	1.25
LHRL-8	LOCK-BACK / WHITE	1000 / 100	5.8	1.35
LHRDS-8	DOME / WHITE	1000 / 100	7.7	1.33
LHRDSB-8	DOME / BLACK	1000 / 100	7.7	1.33
LHRL-10	LOCK-BACK / WHITE	1000 / 50	5.7	1.48
LHRDS-10	DOME / WHITE	1200 / 100	8.2	1.38
LHRDSB-10	DOME / BLACK	1200 / 100	8.2	1.38
LHTDS-12	DOME / WHITE	1200 / 100	10.4	1.36
LHRL-16	LOCK-BACK / WHITE	1000 / 100	7	1.81
LHRDS-16	DOME / WHITE	1200 / 100	11	1.83
LHRDSB-16	DOME / BLACK	1200 / 100	11	1.83

Hot Cups

KX2™ INSULATED HOT CUPS



SIZE/DESC	STOCK #	DESIGN/COLOR	CASE/SLEEVE QUANTITY	CASE WT. (LBS.)	CASE CUBE (CU. FT.)	LID
12 oz.	IMR-12	SA, SH, M	1000 / 50	31	4.1	LHIDS-16, LHIDSB-16, LHIL-16
16 oz.	IMR-16	SA, SH, M	700 / 35	31.5	3.9	LHIDS-16, LHIDSB-16, LHIL-16
20 oz.	IMR-20	SA, SH, M	500 / 25	23	3.5	LHIDS-16, LHIDSB-16, LHIL-16
24 oz.	IMR-24	SA, SH	500 / 25	25.4	4	LHIDS-24, LHIDSB-24

COMMON LIDS

KX2™ INSULATED HOT CUP LIDS



STOCK #	DESIGN/COLOR	CASE/SLEEVE QUANTITY	CASE WT. (LBS.)	CASE CUBE (CU. FT.)
LHIDS-16	DOME / WHITE	1000 / 100	11	2.1
LHIDSB-16	DOME / BLACK	1000 / 100	11	2.1
LHIL-16	LOCK-BACK / WHITE	1000 / 100	8.6	1.7
LHIDS-24	DOME / WHITE	1000 / 100	11.6	2.2
LHIDSB-24	DOME / BLACK	1000 / 100	11.6	2.2

ECOTAINER™ HOT CUPS



SIZE/DESC	STOCK #	DESIGN/COLOR	CASE/SLEEVE QUANTITY	CASE WT. (LBS.)	CASE CUBE (CU. FT.)	LID
4 oz.	SMRE-4	E, ECB	1000/50	9.1	1.33	LHRM-4
8 oz.	SMRE-8	E, ECB	1000/50	20.7	2.73	LHRL-8, LHRDS-8, LHRDSB-8
10 oz.	SMME-10	E, ECB	1000/50	25.4	4	LHRL-16, LHRDS-16, LHRDSB-16
12 oz.	SMRE-12	E, ECB	1000/50	26.8	3.14	LHRL-16, LHRDS-16, LHRDSB-16
16 oz.	SMRE-16	E, ECB	1000/50	34.7	3.99	LHRL-16, LHRDS-16, LHRDSB-16
20 oz.	SMRE-20	E, ECB	500/25	19.9	2.83	LHRL-16, LHRDS-16, LHRDSB-16

COMMON LIDS

VENDING HOT CUPS



SIZE/DESC	STOCK #	DESIGN/COLOR	CASE/SLEEVE QUANTITY	CASE WT. (LBS.)	CASE CUBE (CU. FT.)	LID
7 oz.	SVR-7	I, W	2000 / 100	24	2.73	LHSL-8
8 oz.	SVR-8	I, SH, W	2000 / 100	30.2	3.03	LHSL-8
10 oz.	SVR-10	I, W	2000 / 80	31	3.57	LHSL-9
12 oz.	SVR-12	I, W	1500 / 75	31.7	3.29	LHSL-9
12 oz. squat	SVS-12	I, W	1500 / 75	31	2.96	LHSL-12

COMMON LIDS

VENDING HOT CUP LIDS



STOCK #	DESIGN/COLOR	CASE/SLEEVE QUANTITY	CASE WT. (LBS.)	CASE CUBE (CU. FT.)
LHSL-8	LOCK-BACK / WHITE	2000 / 100	8.3	1.81
LHSL-9	LOCK-BACK / WHITE	2000 / 100	10.7	2.06
LHSL-12	LOCK-BACK / WHITE	1500 / 100	7.3	1.68

CUP BUDDY™



STOCK #	DESIGN/COLOR	CASE/SLEEVE QUANTITY	CASE WT. (LBS.)	CASE CUBE (CU. FT.)
RCDW-20 *	CB, SH	1200 / 100	24	1.34
RCDK-20 *†	KRAFT, SH, E	1200 / 100	24	1.34

* Does not fit 4oz and 8oz cups
 † 100% recycled / 60% from post consumer

CUP CARRIERS



STOCK #	DESIGN/COLOR	CASE/SLEEVE QUANTITY	CASE WT. (LBS.)	CASE CUBE (CU. FT.)
FCD-191025 (2 cell - cup)	KRAFT	250	23	1.73
FCD-181822 (4 cell - cup)	KRAFT	200	23.5	1.73

Product Nomenclature

Cups / Containers

1	2	3	4	5	6	7	8
Material	Application	Shape	Features	Approx. Capacity (oz.)			
D - Double poly S - Single poly P - Plastic I - Insulated	M - Manual V - Vending F - Food T - Travel P - Portion	R - Regular T - Tall S - Squat M - Modified	C - Combo pck. H - Handle K - Clear (plastic) I - Insulated E - Ecotainer™				

Lids

1	2	3	4	5	6	7	8	9
Material	Application	Shape	Type	Descriptor	Approx. Capacity (oz.)			
L - Lid	C - Cold H - Hot F - Food P - Plastic	R - Regular T - Tall S - Squat M - Modified P - Portion I - KX2	S - Slotted V - Vending D - Dome F - Flat H - Finger hole M - Manual L - Lock-back O - Dome/Lrg. opening	S - Styrene K - Crystal O - Dome/Sm. opening H - Hot vented W - White B - Black L - Lock-on M - Modified C - Colored A - APET				

Plates

1	2	3	4	5	6	7	8
Product	Material Caliper	Coating	Type	Size (in)			
P - Plate	H - Heavy M - Medium	L - Laquered					

Folding Carton

1	2	3	4	5	6	7	8	9
Product	Type	Descriptor	Length	Width	Height	First 6 digits of dimensions (cm)		
F - Folding carton R - Formed carton	C - Carriers L - Lock top T - Tray W - Web	D - Drink						

KEY

Example Stock No. — [**DFR-4**]

Character Position No. — [1 2 3 4 5]

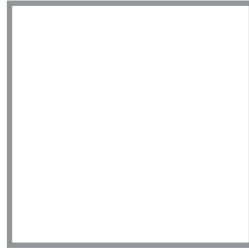
Significance — [**Material** **Application** **Shape** **Special Features** **Capacity (oz.)**]

D-double poly F-food R-regular (none)

All case weights (pounds) and case volumes (cubic feet) are approximated and may vary.



C
Coke



CB
Carte Blanc®



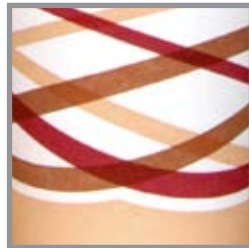
E
Ecotainer™



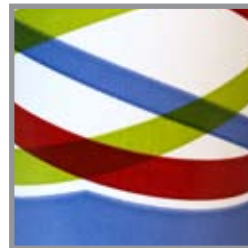
ECB
Ecotainer Carte Blanc™



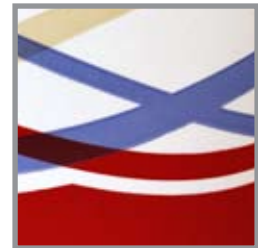
FS
Family Style™



I
Infinity™ Hot Cups



I
Infinity™ Cold Cups



I
Infinity™ Food Packaging



K
Kraft



M
Metro™



PAR
Paradise™



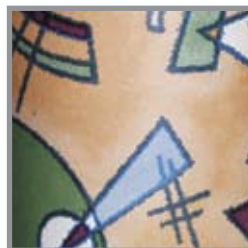
PC
Popcorn™



SA
Sand™



SH
SoHo®



SM
SoMa™



ST
Showtime™ Drink



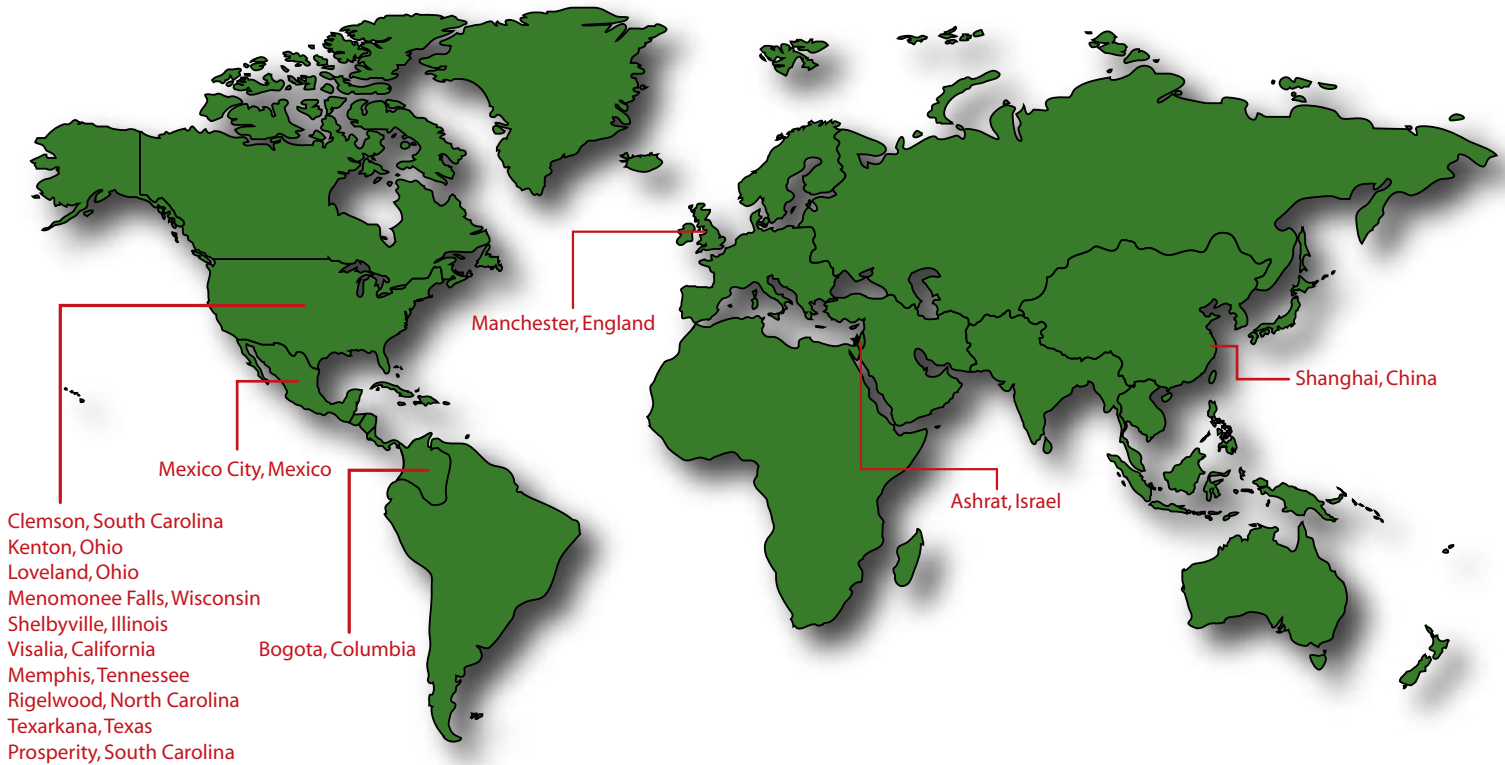
ST
Showtime™ Popcorn



W
Wildcard Vending

Our world-class manufacturing sites and strategically located warehouses ensure reliable international distribution. At International Paper Foodservice Business, we take pride in providing superior service – delivering your orders in full and without errors.

Operations Locations



Markets We Serve

- Aruba
- Australia
- Bolivia
- Canada
- China
- Columbia
- Costa Rica
- Denmark
- Ecuador
- Egypt
- El Salvador
- Finland
- France
- Germany
- Greece
- Guatemala
- Honduras
- Hong Kong
- India
- Ireland
- Israel
- Italy
- Japan
- Korea
- Mexico
- Nicaragua
- Netherlands
- New Zealand
- Panama
- Phillipines
- Portugal
- Singapore
- Spain
- Sweden
- Taiwan
- Tazmania
- Trinidad & Tobago
- United Kingdom
- United States
- Venezuela

For more information on our international operations, please contact Bill Wells at +1 901-419-4791

INTERNATIONAL  PAPER

For more product
information, go to
www.ipfoodservice.com
or call Customer Service
at 800.537.4141